



MONTHLY MEMBERSHIP PROGRESS REPORT

District 20 K1

Results as of: 06/30/2018

GMT: MAHESH CHITNIS

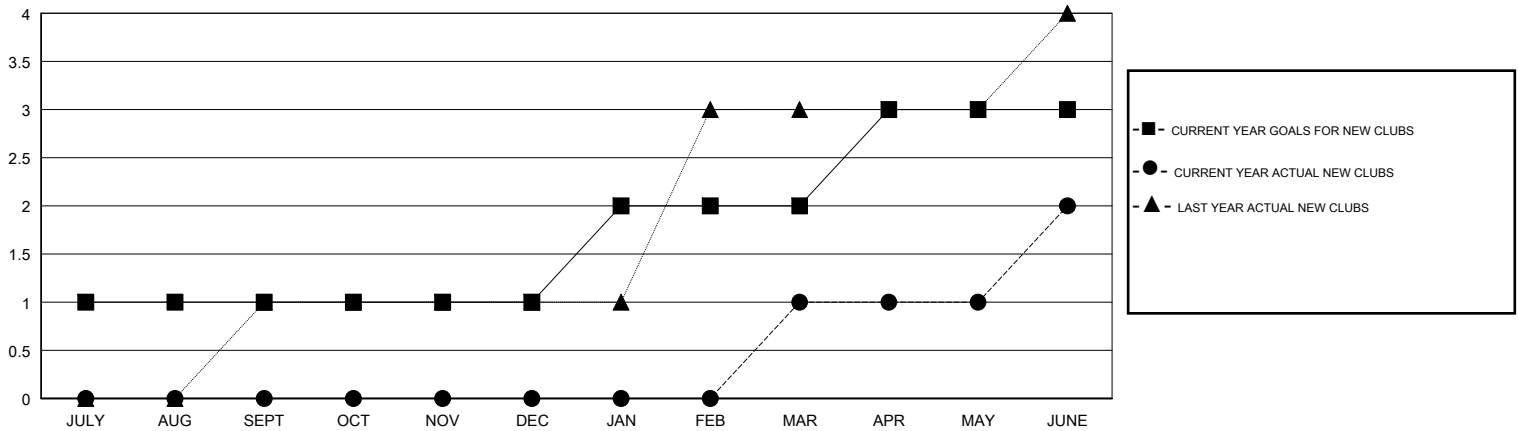
LOCATION NEW YORK

GMT CA

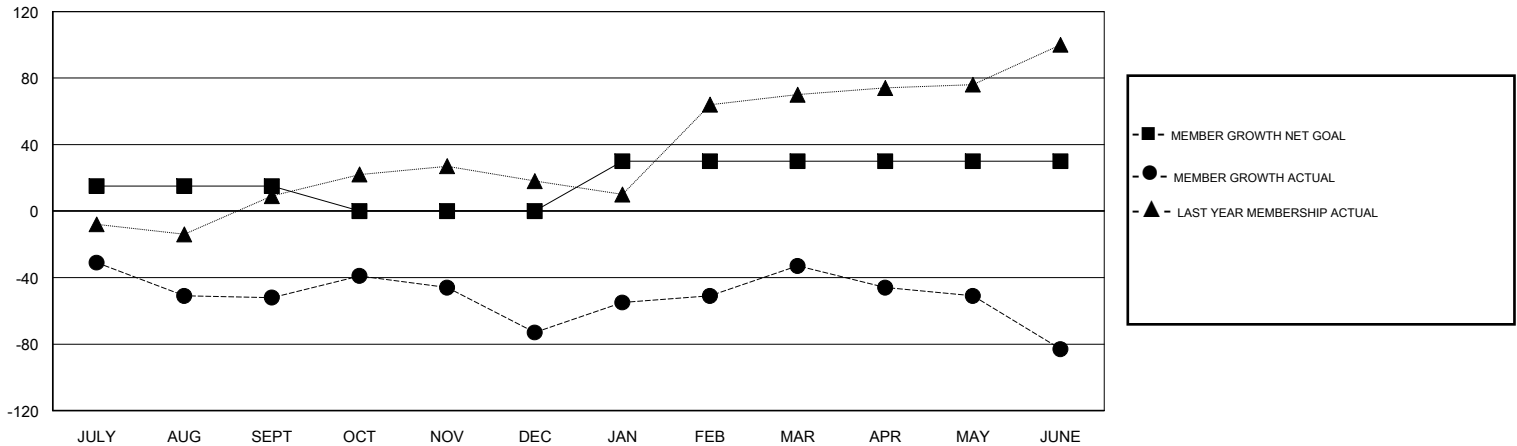
| Clubs | | | |
|-----------------------|---------------|-----------|---------------|
| RESULTS FOR 2017-2018 | | | |
| QUARTER | NEW CLUB GOAL | NEW CLUBS | DROPPED CLUBS |
| JULY/AUG/SEPT | 1 | 0 | 0 |
| OCT/NOV/DEC | 0 | 0 | 1 |
| JAN/FEB/MAR | 1 | 1 | 0 |
| APR/MAY/JUNE | 1 | 1 | 0 |

| Members | | | |
|-----------------------|------------------------|----------------------|--|
| RESULTS FOR 2017-2018 | | | |
| QUARTER | MEMBER GROWTH NET GOAL | MEMBER GROWTH ACTUAL | DROPPED MEMBERS ACTUAL (including transfers) |
| JULY/AUG/SEPT | 15 | 36 | 80 |
| OCT/NOV/DEC | -15 | 46 | 65 |
| JAN/FEB/MAR | 30 | 77 | 33 |
| APR/MAY/JUNE | 0 | 108 | 155 |

GOALS AND ACTUAL NEW CLUBS CUMULATIVE



GOALS AND ACTUAL MEMBERS CUMULATIVE



DROPPED CLUBS: 1

51 CLUBS OF 81 ADDED 1 OR MORE NEW MEMBERS

GENDER DISTRIBUTION

MALE 780 (38.18%)
 FEMALE 1,263 (61.82%)
 Women Percentage Fiscal Year Goal: 60%

DROPPED MEMBERS

[CLICK HERE FOR CUMULATIVE MEMBERSHIP DATA](#)

| | |
|----------------|------------|
| DECEASED | 24 |
| CLUB CANCELLED | 13 |
| OTHER | 296 |
| TOTAL | 333 |

| | |
|---------------------------------|---|
| TOTAL FAMILY UNIT MEMBERS | 0 |
| FAMILY MEMBERS PAYING HALF DUES | 0 |